





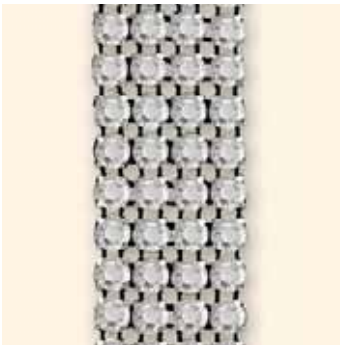
17 METAL *trimmings*

Metal Trimmings are semi-finished metal products integrating XILION Chatons and XILION Flat Backs. They can be sewn by hand or machine, and mechanically applied onto different fabrics or other materials. Metal Trimmings are bestsellers among the textile, shoe and accessories segments because they can be used in a multitude of different ways and feature a whole range of different application possibilities.

Article Explanation

<<<

55 000



R	001-024
SS	SS 20
M	10 M
	100%

55 000	R	SS	M	100%
Article number	Number of rows	Stone size	Minimum order quantity in metres (M)	Documentation size in %
	This article is available from 1 to 24 rows.			

Ordering Example & Product Variety Explanation

<<<

55 000	004	012	012	001
Article number	3-digit code for number of rows	Colour of thread (net-edge on 1 side/ 2 sides): 112/212 Black 122/222 White	Colour of casing 081 Gold 082 Silver 086 Gun metal	Colour of crystals Please see the respective product matrix for all available code references.

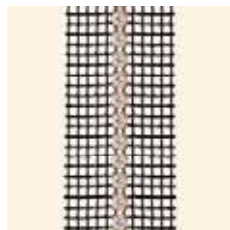
Available Options with Net-edge

<<<

All Chaton & Flat Back Bandings can be ordered with net-edge. This option can be added on one side or on both sides of the banding. Please see the respective product matrix for all available options.



112
Black net-edge
on 1 side



212
Black net-edge
on 2 sides

Available Combinations of Thread & Casing

<<<

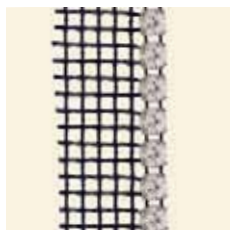
Chaton and Flat Back Bandings are available in three different casing colours and can be combined with two different thread/net-edge colours. Please see the respective product matrix for all available options.



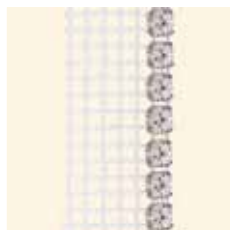
112 081
Black thread,
gold casing



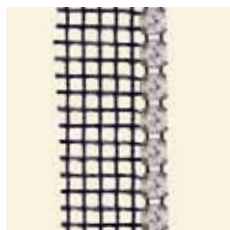
122 081
White thread,
gold casing



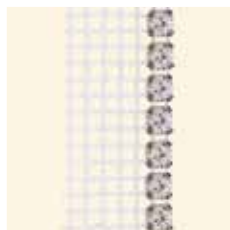
112 082
Black thread,
silver casing



122 082
White thread,
silver casing



112 086
Black thread,
gun metal casing



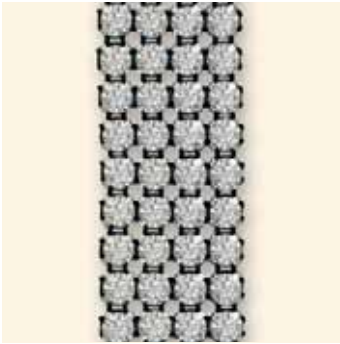
122 086
White thread,
gun metal casing



Metal Trimmings

Chaton Bandings

52 000



R	001-024	
SS	SS 18	
M	10 M	100%

52 001*














R	001	
SS	SS 18	
M	10 M	100%

52 000 52 001*		Colour of Thread / Net-edge	012 / 112 / 212 Black	022 / 122 / 222 White	Colour of Casing	081 Gold	082 Silver	086 Gun Metal
Colour								
Crystal F (001)			■	■		■	■	■
Crystal AB F (001 AB)			■	■		■	■	■
Crystal Copper F (001 COP)			■	■		■	■	■
Crystal Dorado F (001 DOR)			■	■		■	■	■
Crystal Golden Shadow F (001 GSHA)			■	■		■	■	■
Crystal Metallic Blue F (001 METBL)			■	■		■	■	■
Crystal Metallic Light Gold F (001 MLGLD)			■	■		■	■	■
Crystal Silver Shade F (001 SSHA)			■	■		■	■	■
Jet (280)			■	■		■	■	■
Jet Hematite (280 HEM)			■	■		■	■	■
Air Blue Opal F (285)			■	■		■	■	■
Amethyst F (204)			■	■		■	■	■
Black Diamond F (215)			■	■		■	■	■
Cyclamen Opal F (398)			■	■		■	■	■
Dark Indigo F (288)			■	■		■	■	■
Fern Green F (291)			■	■		■	■	■
Fuchsia F (502)			■	■		■	■	■
Greige F (284)			■	■		■	■	■
Indian Pink F (289)			■	■		■	■	■
Jonquil F (213)			■	■		■	■	■
Light Colorado Topaz F (246)			■	■		■	■	■
Light Grey Opal F (383)			■	■		■	■	■
Light Peach F (362)			■	■		■	■	■
Light Sapphire F (211)			■	■		■	■	■
Light Siam F (227)			■	■		■	■	■
Mocca F (286)			■	■		■	■	■
Pacific Opal F (390)			■	■		■	■	■
Padparadscha F (542)			■	■		■	■	■
Palace Green Opal F (393)			■	■		■	■	■
Peridot F (214)			■	■		■	■	■
Provence Lavender F (283)			■	■		■	■	■

* Article 52001 is not available with net-edge. When ordering one row with net-edge, article number 52000 is to be used.



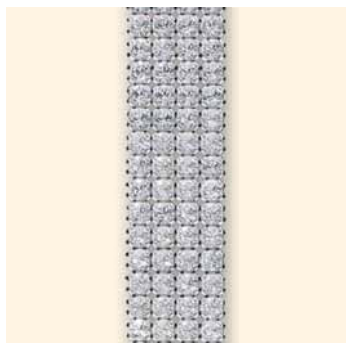
52 000 52 001*		Colour of Thread / Net-edge		Colour of Casing		
		012 / 112 / 212 Black	022 / 122 / 222 White	081 Gold	082 Silver	086 Gun Metal
Colour						
	Purple Velvet F (277)	■	■	■	■	■
	Rose F (209)	■	■	■	■	■
	Rose Water Opal F (395)	■	■	■	■	■
	Sand Opal F (287)	■	■	■	■	■
	Sapphire F (206)	■	■	■	■	■
	Siam F (208)	■	■	■	■	■
	Smoked Topaz F (220)	■	■	■	■	■
	Topaz F (203)	■	■	■	■	■
	Vintage Rose F (319)	■	■	■	■	■
	Light Multi F (908)**	■	■	■	■	■
	Rainbow Multi F (909)***	■	■	■	■	■

* Article 52001 is not available with net-edge. When ordering one row with net-edge, article number 52000 is to be used.

** Light Multi F consists of Crystal, Peridot, Crystal Aurore Boreale, Jonquil, Light Sapphire.

*** Rainbow Multi F consists of Topaz, Light Siam, Fuchsia, Peridot, Sapphire.

52 500



R	001-024	
SS	PP 24	
M	10 M	100%

52 501*














R	001	
SS	PP 24	
M	10 M	100%

52 500 52 501*		Colour of Thread / Net-edge	012 / 112 / 212 Black	022 / 122 / 222 White	Colour of Casing	081 Gold	082 Silver	086 Gun Metal
Colour								
Crystal F (001)			■	■		■	■	■
Crystal AB F (001 AB)			■	■		■	■	■
Crystal Copper F (001 COP)			■	■		■	■	■
Crystal Dorado F (001 DOR)			■	■		■	■	■
Crystal Golden Shadow F (001 GSHA)			■	■		■	■	■
Crystal Metallic Blue F (001 METBL)			■	■		■	■	■
Crystal Metallic Light Gold F (001 MLGLD)			■	■		■	■	■
Crystal Silver Shade F (001 SSHA)			■	■		■	■	■
Jet (280)			■	■		■	■	■
Jet Hematite (280 HEM)			■	■		■	■	■
Air Blue Opal F (285)			■	■		■	■	■
Amethyst F (204)			■	■		■	■	■
Black Diamond F (215)			■	■		■	■	■
Cyclamen Opal F (398)			■	■		■	■	■
Dark Indigo F (288)			■	■		■	■	■
Fern Green F (291)			■	■		■	■	■
Fuchsia F (502)			■	■		■	■	■
Greige F (284)			■	■		■	■	■
Indian Pink F (289)			■	■		■	■	■
Jonquil F (213)			■	■		■	■	■
Light Colorado Topaz F (246)			■	■		■	■	■
Light Grey Opal F (383)			■	■		■	■	■
Light Peach F (362)			■	■		■	■	■
Light Sapphire F (211)			■	■		■	■	■
Light Siam F (227)			■	■		■	■	■
Mocca F (286)			■	■		■	■	■
Pacific Opal F (390)			■	■		■	■	■
Padparadscha F (542)			■	■		■	■	■
Palace Green Opal F (393)			■	■		■	■	■
Peridot F (214)			■	■		■	■	■
Provence Lavender F (283)			■	■		■	■	■

* Article 52501 is not available with net-edge. When ordering one row with net-edge, article number 52500 is to be used.



52 500 52 501*		Colour of Thread / Net-edge		Colour of Casing		
		012 / 112 / 212 Black	022 / 122 / 222 White	081 Gold	082 Silver	086 Gun Metal
Colour						
	Purple Velvet F (277)	■	■	■	■	■
	Rose F (209)	■	■	■	■	■
	Rose Water Opal F (395)	■	■	■	■	■
	Sand Opal F (287)	■	■	■	■	■
	Sapphire F (206)	■	■	■	■	■
	Siam F (208)	■	■	■	■	■
	Smoked Topaz F (220)	■	■	■	■	■
	Topaz F (203)	■	■	■	■	■
	Vintage Rose F (319)	■	■	■	■	■
	Light Multi F (908)**	■	■	■	■	■
	Rainbow Multi F (909)***	■	■	■	■	■

* Article 52501 is not available with net-edge. When ordering one row with net-edge, article number 52500 is to be used.

** Light Multi F consists of Crystal, Peridot, Crystal Aurore Boreale, Jonquil, Light Sapphire.

*** Rainbow Multi F consists of Topaz, Light Siam, Fuchsia, Peridot, Sapphire.

55 000



R	001-024	
SS	SS 20	
M	10 M	100%

55 001*



R	001	
SS	SS 20	
M	10 M	100%

55 000 55 001*		Colour of Thread / Net-edge	012 / 112 / 212 Black	022 / 122 / 222 White	Colour of Casing	081 Gold	082 Silver	086 Gun Metal
Colour								
Crystal F (001)								
Crystal AB F (001 AB)								
Crystal Copper F (001 COP)								
Crystal Dorado F (001 DOR)								
Crystal Golden Shadow F (001 GSHA)								
Crystal Metallic Blue F (001 METBL)								
Crystal Metallic Light Gold F (001 MLGLD)								
Crystal Red Magma F (001 REDM)								
Crystal Silver Shade F (001 SSHA)								
Jet (280)								
Jet Hematite (280 HEM)								
Jet Nut (280 Nut)								
Air Blue Opal F (285)								
Amethyst F (204)								
Black Diamond F (215)								
Caribbean Blue Opal F (394)								
Chrysolite F (238)								
Cyclamen Opal F (398)								
Dark Indigo F (288)								
Fern Green F (291)								
Fuchsia F (502)								
Greige F (284)								
Indian Pink F (289)								
Jonquil F (213)								
Khaki F (550)								
Light Amethyst F (212)								
Light Colorado Topaz F (246)								
Light Grey Opal F (383)								
Light Sapphire F (211)								
Light Siam F (227)								
Mocca F (286)								

* Article 55001 is not available with net-edge. When ordering one row with net-edge, article number 55000 is to be used.

		Colour of Thread / Net-edge		Colour of Casing		
		012 / 112 / 212 Black	022 / 122 / 222 White	081 Gold	082 Silver	086 Gun Metal
55 000 55 001*						
Colour						
Pacific Opal F (390)		■	■	■	■	■
Palace Green Opal F (393)		■	■	■	■	■
Peridot F (214)		■	■	■	■	■
Provence Lavender F (283)		■	■	■	■	■
Purple Velvet F (277)		■	■	■	■	■
Rose F (209)		■	■	■	■	■
Sand Opal F (287)		■	■	■	■	■
Sapphire F (206)		■	■	■	■	■
Siam F (208)		■	■	■	■	■
Smoked Topaz F (220)		■	■	■	■	■
Topaz F (203)		■	■	■	■	■
Vintage Rose F (319)		■	■	■	■	■
Light Multi F (908)**		■	■	■	■	■
Rainbow Multi F (909)***		■	■	■	■	■

* Article 55001 is not available with net-edge. When ordering one row with net-edge, article number 55000 is to be used.

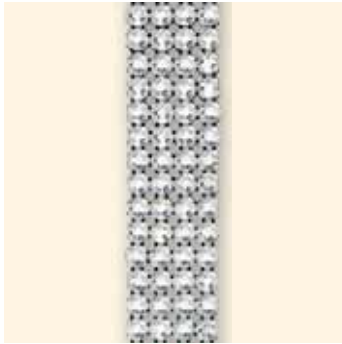
** Light Multi F consists of Crystal, Peridot, Crystal Aurore Boreale, Jonquil, Light Sapphire.

*** Rainbow Multi F consists of Topaz, Light Siam, Fuchsia, Peridot, Sapphire.

Metal Trimmings

Flat Back Bandings

55 500



R	001-024	
SS	SS 12	
M	10 M	100%















55 501*



R	001	
SS	SS 12	
M	10 M	100%

55 500 55 501*		Colour of Thread / Net-edge	012 / 112 / 212 Black	022 / 122 / 222 White	Colour of Casing	081 Gold	082 Silver	086 Gun Metal
Colour								
Crystal F (001)			■	■		■	■	■
Crystal AB F (001 AB)			■	■		■	■	■
Crystal Copper F (001 COP)			■	■		■	■	■
Crystal Dorado F (001 DOR)			■	■		■	■	■
Crystal Golden Shadow F (001 GSHA)			■	■		■	■	■
Crystal Metallic Blue F (001 METBL)			■	■		■	■	■
Crystal Metallic Light Gold F (001 MLGLD)			■	■		■	■	■
Crystal Red Magma F (001 REDM)		New!	■	■		■	■	■
Crystal Silver Shade F (001 SSHA)			■	■		■	■	■
Jet (280)			■	■		■	■	■
Jet Hematite (280 HEM)			■	■		■	■	■
Jet Nut (280 Nut)			■	■		■	■	■
Air Blue Opal F (285)			■	■		■	■	■
Amethyst F (204)			■	■		■	■	■
Black Diamond F (215)			■	■		■	■	■
Caribbean Blue Opal F (394)			■	■		■	■	■
Chrysolite F (238)			■	■		■	■	■
Cyclamen Opal F (398)			■	■		■	■	■
Dark Indigo F (288)			■	■		■	■	■
Fern Green F (291)			■	■		■	■	■
Fuchsia F (502)			■	■		■	■	■
Greige F (284)			■	■		■	■	■
Indian Pink F (289)			■	■		■	■	■
Jonquil F (213)			■	■		■	■	■
Khaki F (550)			■	■		■	■	■
Light Amethyst F (212)			■	■		■	■	■
Light Colorado Topaz F (246)			■	■		■	■	■
Light Grey Opal F (383)			■	■		■	■	■
Light Sapphire F (211)			■	■		■	■	■
Light Siam F (227)			■	■		■	■	■
Mocca F (286)			■	■		■	■	■

* Article 55501 is not available with net-edge. When ordering one row with net-edge, article number 55500 is to be used.

55 500 55 501*		Colour of Thread / Net-edge		Colour of Casing		
		012 / 112 / 212 Black	022 / 122 / 222 White	081 Gold	082 Silver	086 Gun Metal
Colour						
	Pacific Opal F (390)	■	■	■	■	■
	Palace Green Opal F (393)	■	■	■	■	■
	Peridot F (214)	■	■	■	■	■
	Provence Lavender F (283)	■	■	■	■	■
	Purple Velvet F (277)	■	■	■	■	■
	Rose F (209)	■	■	■	■	■
	Sand Opal F (287)	■	■	■	■	■
	Sapphire F (206)	■	■	■	■	■
	Siam F (208)	■	■	■	■	■
	Smoked Topaz F (220)	■	■	■	■	■
	Topaz F (203)	■	■	■	■	■
	Vintage Rose F (319)	■	■	■	■	■
	Light Multi F (908)**	■	■	■	■	■
	Rainbow Multi F (909)***	■	■	■	■	■

* Article 55501 is not available with net-edge. When ordering one row with net-edge, article number 55500 is to be used.

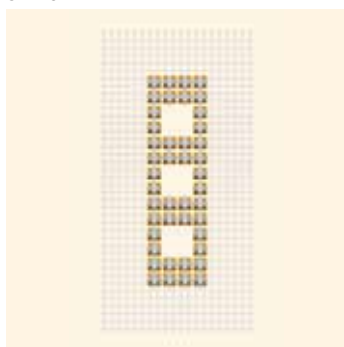
** Light Multi F consists of Crystal, Peridot, Crystal Aurore Boreale, Jonquil, Light Sapphire.

*** Rainbow Multi F consists of Topaz, Light Siam, Fuchsia, Peridot, Sapphire.

Article Explanation

<<<

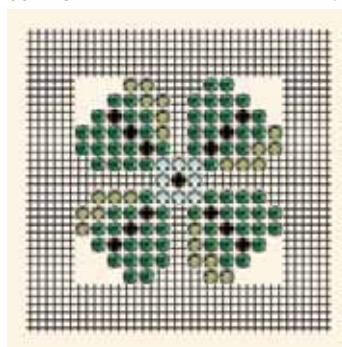
52 101



C	081-001
E	CH SS18
S	-20x70 mm
M	10 PCS
	40%

55 113

02



C	086-393/550/286/238
E	FB SS20/SS20/SS20/SS20
S	-65x65 mm
M	10 PCS
	42%

52 101	C	E	S	M	40%	
Article number	Colour assortment	Elements and stone sizes	Motif size in mm without net-edge	Minimum order quantity in pieces (PCS)	Documentation size in %	
	Colour of casing (081) is separated from crystal colours with a hyphen. Colour code 1 (001) corresponds to element 1 (SS18). For details, please refer to the colour overview of Chatons at the beginning of this Collection.	This product is a Chaton Motif (CH). For details please refer to the sizes overview at the end of this Collection.	Slight size deviations may occur, +/- 2% or +/- 8% depending on the motif			
55 113	C	E	S	M	02	42%
Article number	Colour assortment	Elements and stone sizes	Motif size in mm without net-edge	Minimum order quantity in pieces (PCS)	This product is shown on flag number 2.	Documentation size in %
	Colour of casing (086) is separated from crystal colours with a hyphen. Colour code 1 (393) corresponds to element 1 (SS20); Colour code 2 (550) corresponds to element 2 (SS20) etc. For details, please refer to the colour overview of Chatons at the beginning of this Collection.	This product is a Flat Back Motif (FB). For details please refer to the sizes overview at the end of this Collection.	Slight size deviations may occur, +/- 2% or +/- 8% depending on the motif			



Ordering Example & Product Variety Explanation

<<<

52 101	001	422	081	001	-
Article number	3-digit code for number of rows Always 001	Colour of thread & net-edge Chaton Motives by piece: Chaton Motives by metre: Please see the respective product tables for all available net-edge options.	Colour of casing 081 Gold 082 Silver 086 Gun metal	Crystal colour corresponding to element 1; colour of most frequently used element in the motif Please see the respective product matrix for all available code references.	Crystal colour corresponding to element 2; colour of second most frequently used element in the motif
55 113	001	422	086	>>	
Article number	3-digit code for number of rows Always 001	Colour of thread & net-edge Flat Back Motives by piece: Flat Back Motives by the metre: Please see the respective product tables for all available net-edge options.	Colour of casing 081 Gold 082 Silver 086 Gun metal		
393	550	286	238	>>	
>>	Crystal colour corresponding to element 1; colour of most frequently used element in the motif Please see the respective product matrix for all available code references.	Crystal colour corresponding to element 2; colour of second most frequently used element in the motif	Crystal colour corresponding to element 3; colour of third most frequently used element in the motif	Crystal colour corresponding to element 4; colour of fourth most frequently used element in the motif	



Available Options with Net-edge

<<<

Depending on the motif, Chaton and Flat Back Motives can be ordered with net-edge on 0, 1, 2, 3 or 4 sides.*
Please see the respective product matrix for all available options and tolerances.



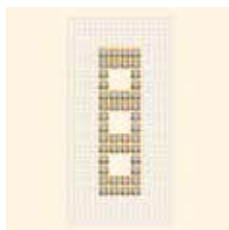
122
White net-edge
on one side



322
White net-edge
on three sides



222
White net-edge
on two sides

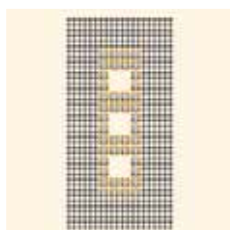


422
White net-edge
on four sides

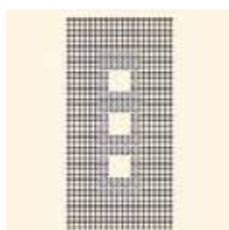
Available Thread / Net-edge & Casing Colours

<<<

Chaton and Flat Back Motives are available in three different casing colours and can be combined with two different thread / net-edge colours. Please see the respective product matrix for all available options.



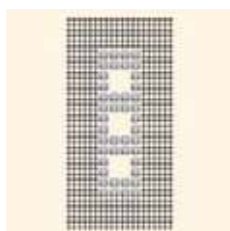
412 081
Black thread
& net-edge
on four sides,
gold casing



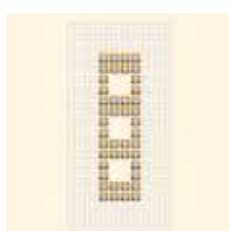
412 086
Black thread
& net-edge
on four sides,
gun metal
casing



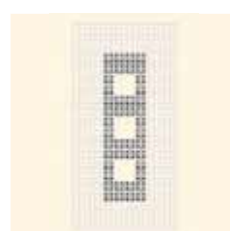
422 082
White thread
& net-edge
on four sides,
silver casing



412 082
Black thread
& net-edge
on four sides,
silver casing



422 081
White thread
& net-edge
on four sides,
gold casing



422 086
White thread
& net-edge
on four sides,
gun metal casing



* Please note: depending on the motif, Chaton and Flat Back Motives by the metre are only available with net-edge on none, one or two sides.

Metal Trimmings

Chaton Motives

52 100
to
52 608

Colour of Casing

081 Gold
082 Silver
086 Gun Metal

Colour	081 Gold	082 Silver	086 Gun Metal
Crystal F (001)	■	■	■
Crystal AB F (001 AB)	■	■	■
Crystal Copper F (001 COP)	■	■	■
Crystal Dorado F (001 DOR)	■	■	■
Crystal Golden Shadow F (001 GSHA)	■	■	■
Crystal Metallic Blue F (001 METBL)	■	■	■
Crystal Metallic Light Gold F (001 MLGLD)	■	■	■
Crystal Silver Shade F (001 SSHA)	■	■	■
Jet (280)	■	■	■
Jet Hematite (280 HEM)	■	■	■
Air Blue Opal F (285)	■	■	■
Amethyst F (204)	■	■	■
Black Diamond F (215)	■	■	■
Cyclamen Opal F (398)	■	■	■
Dark Indigo F (288)	■	■	■
Fern Green F (291)	■	■	■
Fuchsia F (502)	■	■	■
Greige F (284)	■	■	■
Indian Pink F (289)	■	■	■
Jonquil F (213)	■	■	■
Light Colorado Topaz F (246)	■	■	■
Light Grey Opal F (383)	■	■	■
Light Peach F (362)	■	■	■
Light Sapphire F (211)	■	■	■
Light Siam F (227)	■	■	■
Mocca F (286)	■	■	■
Pacific Opal F (390)	■	■	■
Padparadscha F (542)	■	■	■

52 100
to
52 608

Colour of Casing

081 Gold
082 Silver
086 Gun Metal

Colour	081 Gold	082 Silver	086 Gun Metal
Palace Green Opal F (393)	■	■	■
Peridot F (214)	■	■	■
Provence Lavender F (283)	■	■	■
Purple Velvet F (277)	■	■	■
Rose F (209)	■	■	■
Rose Water Opal F (395)	■	■	■
Sand Opal F (287)	■	■	■
Sapphire F (206)	■	■	■
Siam F (208)	■	■	■
Smoked Topaz F (220)	■	■	■
Topaz F (203)	■	■	■
Vintage Rose F (319)	■	■	■
Light Multi F (908)*	■	■	■
Rainbow Multi F (909)**	■	■	■

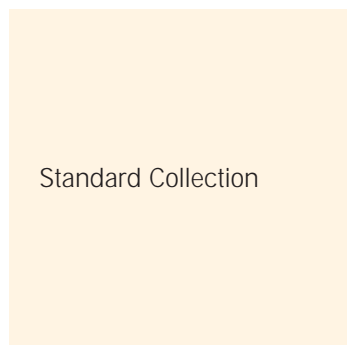
* Light Multi F consists of Crystal, Peridot, Crystal Aurore Boreale, Jonquil, Light Sapphire.

** Rainbow Multi F consists of Topaz, Light Siam, Fuchsia, Peridot, Sapphire.

Metal Trimmings

Chaton Motives

Standard Collection



Standard Collection

52 100



C	081-001
E	CH SS18
S	30x45
M	10 PCS
	56%

52 101



C	081-001
E	CH SS18
S	~20x70
M	10 PCS
	43%

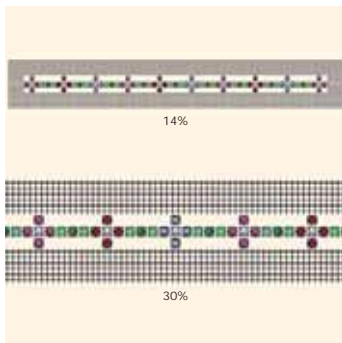
52 102



C	081-001
E	CH SS18
S	~15x105
M	10 PCS
	32%

52 111*

02



C	086-291/502/208/001METBL/001AB/393
E	CH SS18/.../SS18
S	~285x15
M	10 PCS

52 113

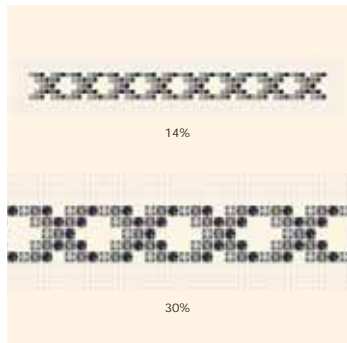
02



C	081-286/001GSHA/001COP/319/220/280NUT
E	CH SS18/.../SS18
S	~275x90
M	10 PCS
	14%

52 114

02



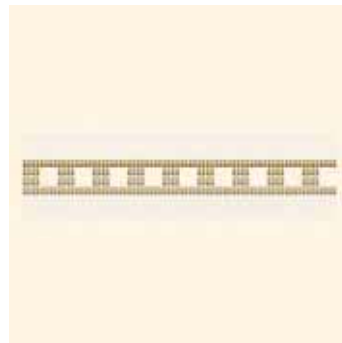
C	086-280HEM/215/001
E	CH SS18/SS18/SS18
S	~280x25
M	10 PCS

52 200



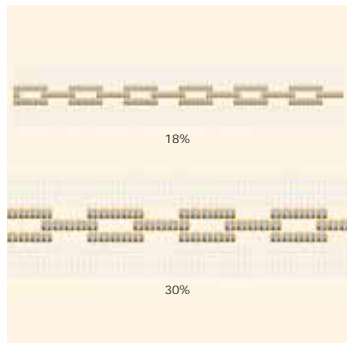
C	081-001
E	CH SS18
S	~30x45
M	10 M
	45%

52 201



C	081-001
E	CH SS18
S	~60x20
M	10 M
	23%

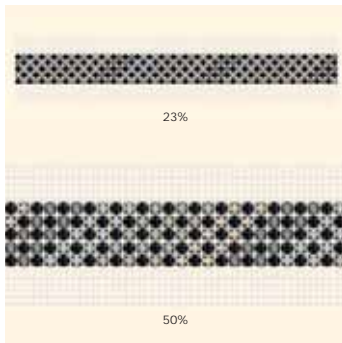
52 202



C	081-001
E	CH SS18
S	~80x15
M	10 M

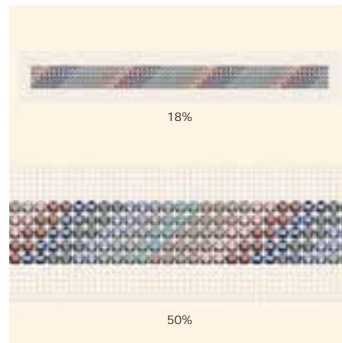
52 604

Innovation Box Ext.



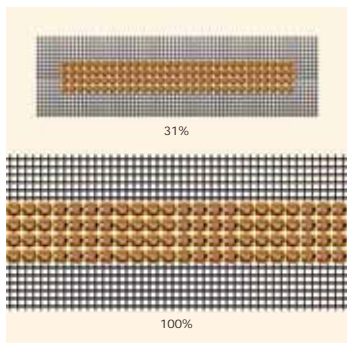
C	086-280/001SSHA/383/001/215
E	CH PP24/PP24/PP24/PP24/PP24
S	~61x17
M	10 M

52 605*



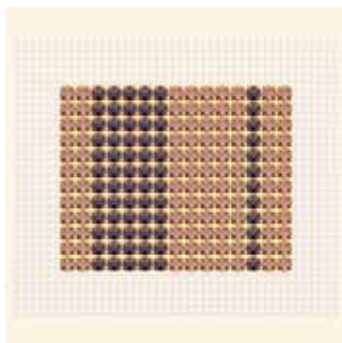
C	082-220/001METBL/215/362/211/001GSHA/001SSHA/001MLGLD/390
E	CH PP24/.../PP24
S	~217x17
M	10 PCS

52 606*



C	081-001COP/203
E	CH PP24/PP24
S	-99x14
M	10 PCS

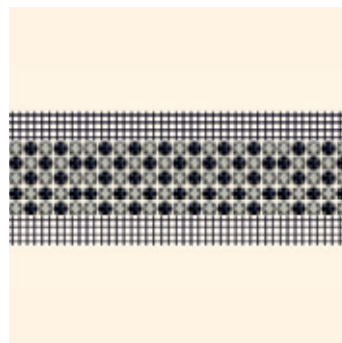
52 607*



C	081-319/277	
E	CH PP24/PP24	
S	-51x41	
M	10 PCS	60%

52 608

Product Summaries

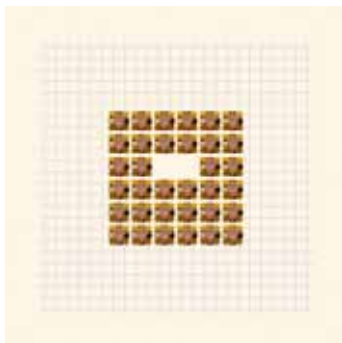


C	086-001SSHA/280	
E	CH PP24/PP24	
S	-45x17 (EXCL. NET-EDGE)	
M	10 M	56%



52 108

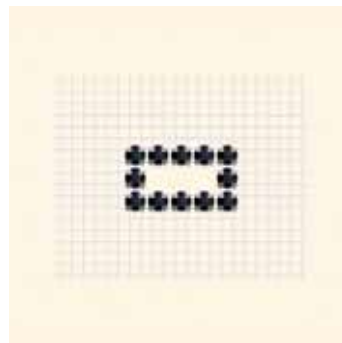
09



C	081-001COP	
E	CH SS18	
S	-30x30	
M	10 PCS	60%

52 109

09

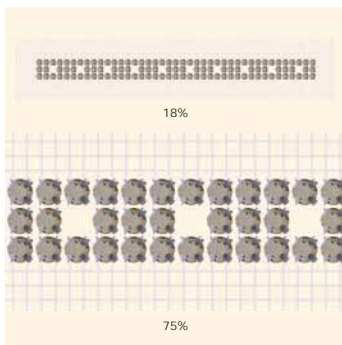


C	082-280	
E	CH SS18	
S	-25x15	
M	10 PCS	60%



52 110*

13

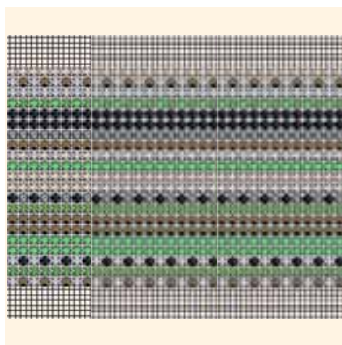


C	082-001MLGLD
E	CH SS18
S	-15x205
M	10 PCS



52 115*

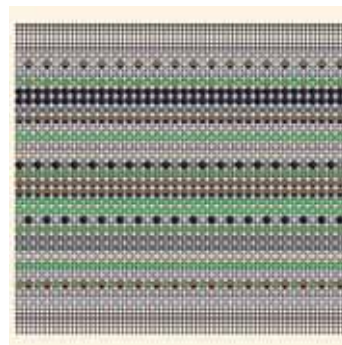
03



C	086-001DOR/291/383/001/280/214/215	
E	CH SS18/SS18/SS18/SS18/SS18/SS18/SS18	
S	-18x97	
M	10 M	30%

52 603*

03



C	086-383/291/001/001DOR/215/214/280	
E	CH PP24/PP24/PP24/PP24/PP24/PP24/PP24	
S	-41x95	
M	10 M	43%

* Please note that slight colour changes have been made.

Available Options with Net-edge

<<<

Article Number	None	1 Side	2 Sides	3 Sides	4 Sides	Tolerance
52100			212 Black / 222 White	312 Black / 322 White	412 Black / 422 White	+/- 8%
52101		112 Black / 122 White	212 Black / 222 White	312 Black / 322 White	412 Black / 422 White	+/- 8%
52102		112 Black / 122 White	212 Black / 222 White	312 Black / 322 White	412 Black / 422 White	+/- 8%
52108	012 Black / 022 White	112 Black / 122 White	212 Black / 222 White	312 Black / 322 White	412 Black / 422 White	+/- 8%
52109			212 Black / 222 White	312 Black / 322 White	412 Black / 422 White	+/- 8%
52110	012 Black / 022 White	112 Black / 122 White	212 Black / 222 White	312 Black / 322 White	412 Black / 422 White	+/- 8%
52111			212 Black / 222 White	312 Black / 322 White	412 Black / 422 White	+/- 8%
52113					412 Black / 422 White	+/- 8%
52114		112 Black / 122 White	212 Black / 222 White	312 Black / 322 White	412 Black / 422 White	+/- 8%
52115	012 Black / 022 White	112 Black / 122 White	212 Black / 222 White			+/- 2%
52200		112 Black / 122 White	212 Black / 222 White			+/- 8%
52201		112 Black / 122 White	212 Black / 222 White			+/- 8%
52202		112 Black / 122 White	212 Black / 222 White			+/- 8%
52603	012 Black / 022 White	112 Black / 122 White	212 Black / 222 White			+/- 2%
52604	012 Black / 022 White	112 Black / 122 White	212 Black / 222 White			+/- 2%
52605	012 Black / 022 White	112 Black / 122 White	212 Black / 222 White	312 Black / 322 White	412 Black / 422 White	+/- 2%
52606	012 Black / 022 White	112 Black / 122 White	212 Black / 222 White	312 Black / 322 White	412 Black / 422 White	+/- 2%
52607	012 Black / 022 White	112 Black / 122 White	212 Black / 222 White	312 Black / 322 White	412 Black / 422 White	+/- 2%
52608	012 Black / 022 White	112 Black / 122 White	212 Black / 222 White			+/- 2%

Metal Trimmings

Flat Back Motives

55 100
to
55 618

Colour of Casing
081 Gold
082 Silver
086 Gun Metal

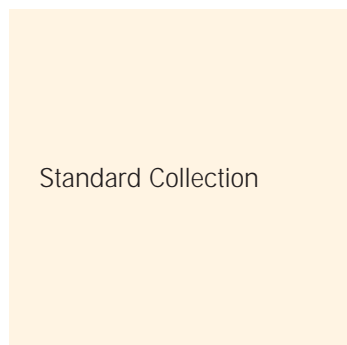
Colour	081 Gold	082 Silver	086 Gun Metal
Crystal F (001)	■	■	■
Crystal AB F (001 AB)	■	■	■
Crystal Copper F (001 COP)	■	■	■
Crystal Dorado F (001 DOR)	■	■	■
Crystal Golden Shadow F (001 GSHA)	■	■	■
Crystal Metallic Blue F (001 METBL)	■	■	■
Crystal Metallic Light Gold F (001 MLGLD)	■	■	■
Crystal Red Magma F (001 REDM)	■	■	■
Crystal Silver Shade F (001 SSHA)	■	■	■
Jet (280)	■	■	■
Jet Hematite (280 HEM)	■	■	■
Jet Nut (280 Nut)	■	■	■
Air Blue Opal F (285)	■	■	■
Amethyst F (204)	■	■	■
Black Diamond F (215)	■	■	■
Caribbean Blue Opal F (394)	■	■	■
Chrysolite F (238)	■	■	■
Cyclamen Opal F (398)	■	■	■
Dark Indigo F (288)	■	■	■
Fern Green F (291)	■	■	■
Fuchsia F (502)	■	■	■
Greige F (284)	■	■	■
Indian Pink F (289)	■	■	■
Jonquil F (213)	■	■	■
Khaki F (550)	■	■	■
Light Amethyst F (212)	■	■	■
Light Colorado Topaz F (246)	■	■	■
Light Grey Opal F (383)	■	■	■
Light Sapphire F (211)	■	■	■
Light Siam F (227)	■	■	■
Mocca F (286)	■	■	■

55 100
to
55 618

Colour of Casing
081 Gold
082 Silver
086 Gun Metal

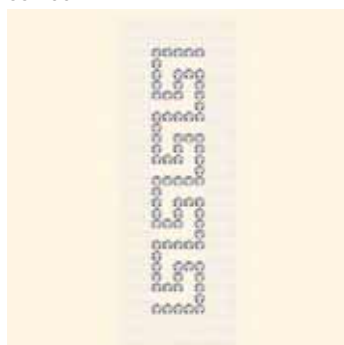
Colour	081 Gold	082 Silver	086 Gun Metal
Pacific Opal F (390)	■	■	■
Palace Green Opal F (393)	■	■	■
Peridot F (214)	■	■	■
Provence Lavender F (283)	■	■	■
Purple Velvet F (277)	■	■	■
Rose F (209)	■	■	■
Sand Opal F (287)	■	■	■
Sapphire F (206)	■	■	■
Siam F (208)	■	■	■
Smoked Topaz F (220)	■	■	■
Topaz F (203)	■	■	■
Vintage Rose F (319)	■	■	■
Light Multi F (908)*	■	■	■
Rainbow Multi F (909)**	■	■	■

* Light Multi F consists of Crystal, Peridot, Crystal Aurore Boreale, Jonquil, Light Sapphire.
 ** Rainbow Multi F consists of Topaz, Light Siam, Fuchsia, Peridot, Sapphire.



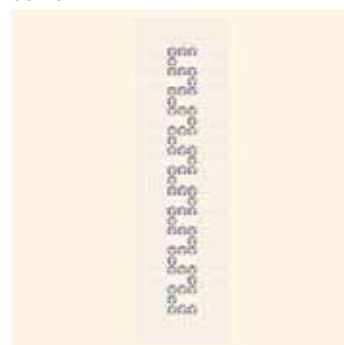
Standard Collection

55 100



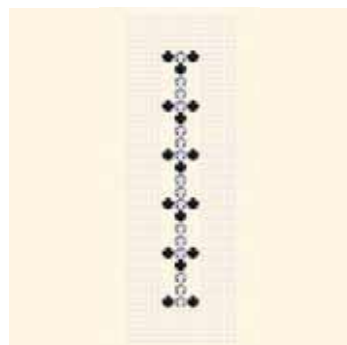
C	082-001
E	FB SS20
S	~25x125
M	10 PCS
	28%

55 101



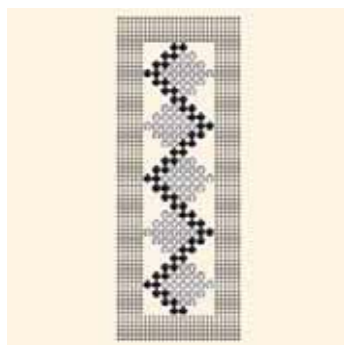
C	082-001
E	FB SS20
S	~15x135
M	10 PCS
	26%

55 102



C	082-280/001
E	FB SS20/SS20
S	~15x105
M	10 PCS
	32%

55 103



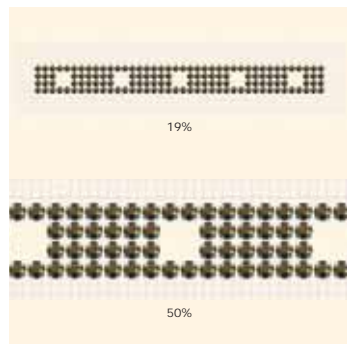
C	082-001/280
E	FB SS20/SS20
S	~40x155
M	10 PCS
	23%

55 105



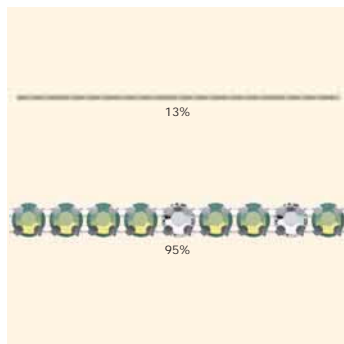
C	081-220/001GSHA/001DOR/215/203/550/280NUT
E	FB SS20/.../SS20
S	~133x88
M	10 PCS
	27%

55 106



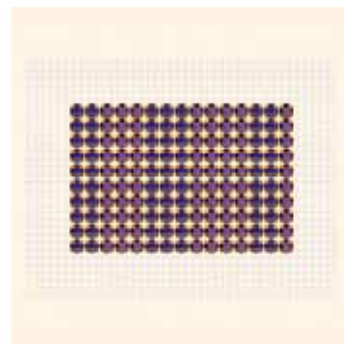
C	082-280NUT
E	FB SS20
S	~201x20
M	10 PCS

55 108



C	082-390/001
E	FB SS20/SS20
S	~108x5
M	10 M

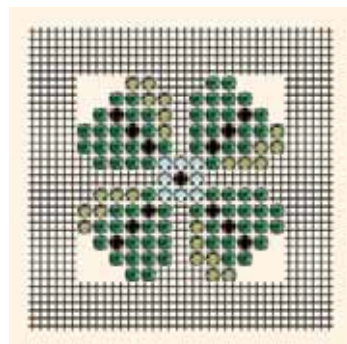
55 110



C	081-204/277
E	FB SS20/SS20
S	~74x49
M	10 PCS
	40%

55 113

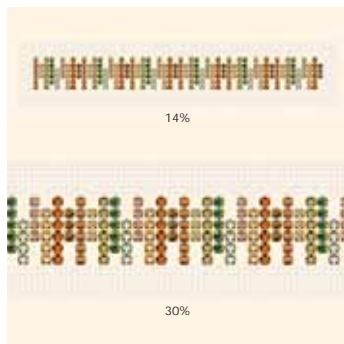
02



C	086-393/550/286/238
E	FB SS20/SS20/SS20/SS20
S	~65x65
M	10 PCS
	42%

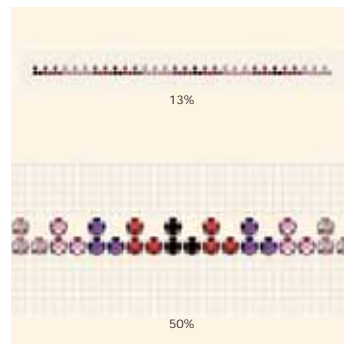
55 114*

02



C	081-550/001COP/220/393/246/238/284/287/001DOR
E	FB SS20/.../SS20
S	~271x30
M	10 PCS

55 115



C	082-209/204/208/286/319
E	FB SS20/.../SS20
S	~301x10
M	10 PCS

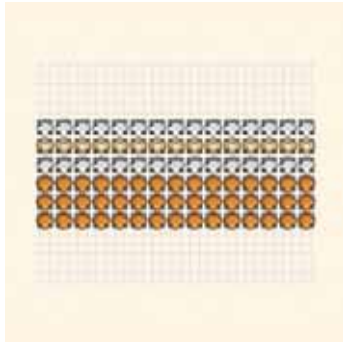


Metal Trimmings

Flat Back Motives

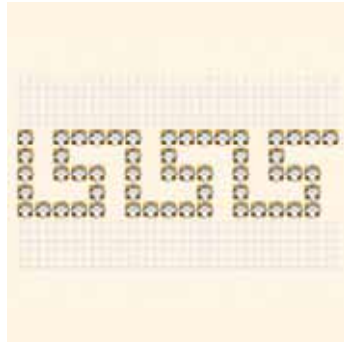
Standard Collection

55 118



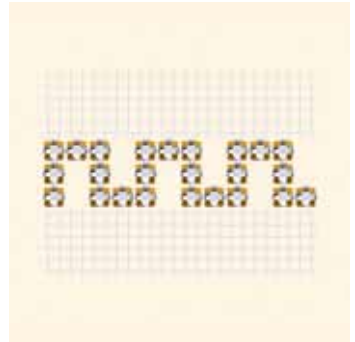
C	086-203/001/246
E	FB SS20/SS20/SS20
S	-24x29
M	10 M
	50%

55 200



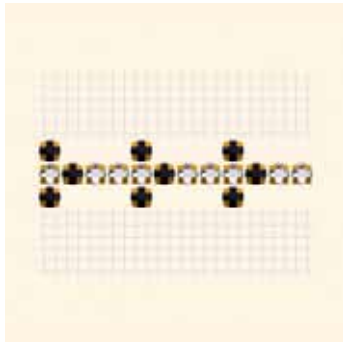
C	081-001
E	FB SS20
S	-30x25
M	10 M
	47%

55 201



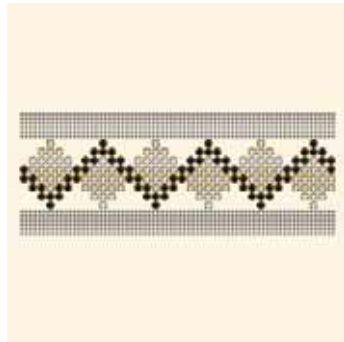
C	081-001
E	FB SS20
S	-20x15
M	10 M
	60%

55 202



C	081-280/001
E	FB SS20/SS20
S	-20x15
M	10 M
	60%

55 203



C	081-001/280
E	FB SS20/SS20
S	-60x40
M	10 M
	23%

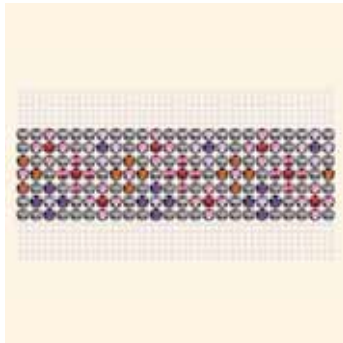
55 602



C	086-001AB/394/001METBL/280HEM/280
E	FB SS12/SS12/SS12/SS12/SS12
S	-311x84
M	10 PCS
	13%

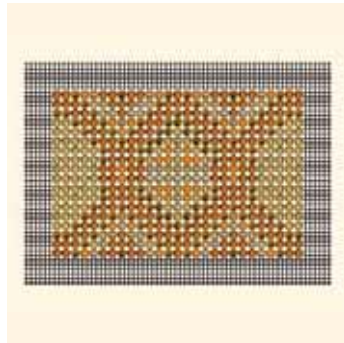
02

55 604*



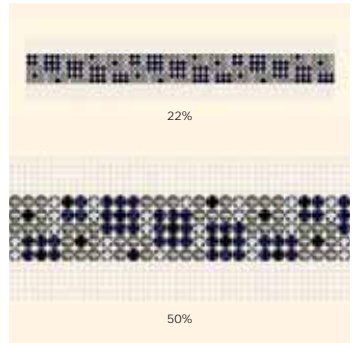
C	082-215/209/212/204/220/289/208
E	FB SS12/SS12/SS12/SS12/SS12/SS12/SS12
S	-28x24
M	10 M
	50%

55 605



C	081-220/001GSHA/001DOR/215/203/550/280NUT
E	FB SS12/SS12/SS12/SS12/SS12/SS12/SS12
S	-94x63
M	10 PCS
	35%

55 607



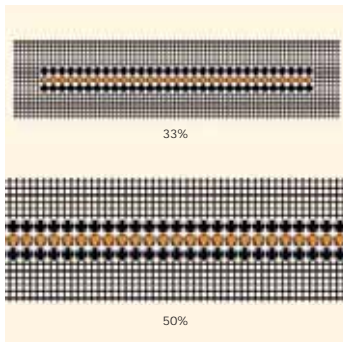
C	086-288/215/001/280
E	FB SS12/SS12/SS12/SS12
S	-61x17
M	10 M

Innovation Box Ext.

22%

50%

55 609



C	082-280/203
E	FB SS12/SS12
S	-108x10
M	10 PCS

33%

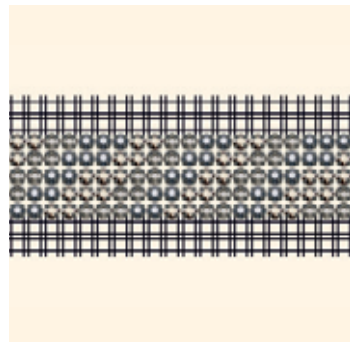
50%

55 610



C	081-204/277
E	FB SS12/SS12
S	-52x35
M	10 PCS
	50%

55 614

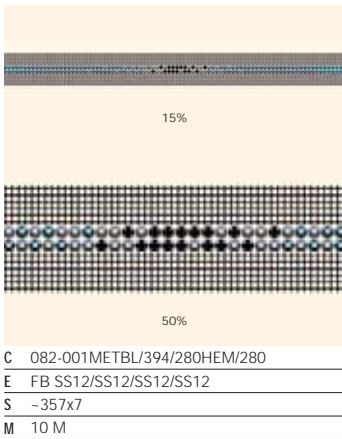


C	086-001SSHA/280HEM/215
E	FB SS12/SS12/SS12
S	-45x17 (EXCL. NET-EDGE)
M	10 M
	64%

Product Summaries

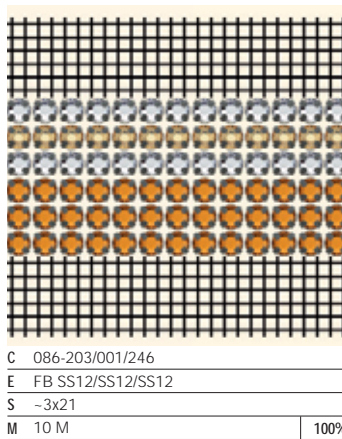
* Please note that slight colour changes have been made.

55 617



C	082-001METBL/394/280HEM/280
E	FB SS12/SS12/SS12/SS12
S	-357x7
M	10 M

55 618



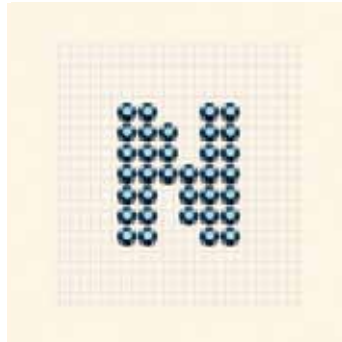
C	086-203/001/246
E	FB SS12/SS12/SS12
S	-3x21
M	10 M
	100%



Trend Collection
Spring/Summer 2007

55 111

09



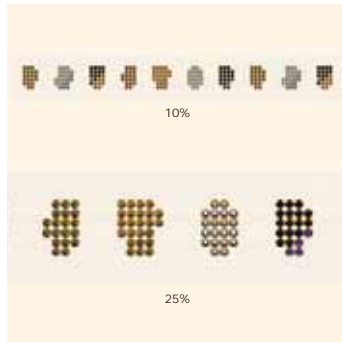
C	082-001METBL
E	FB SS20
S	-29x34
M	10 PCS
	55%



Trend Collection
Autumn/Winter 2007/08

55 112

02



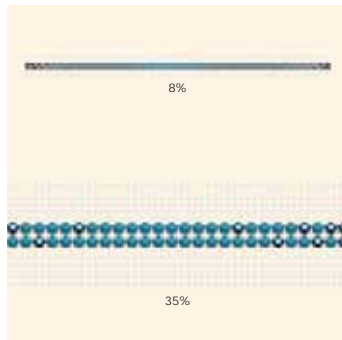
C	081-280NUT/280HEM/280/001DOR/ 001METBL/277
E	FB SS20/.../SS20
S	-388x29
M	10 PCS



Trend Collection
Spring/Summer 2009

55 117

12



C	082-001METBL/394/280HEM/280
E	FB SS20/.../SS20
S	-501x10
M	10 M

Metal Trimmings

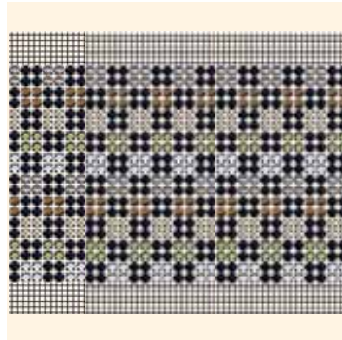
Flat Back Motives

Trend Collections



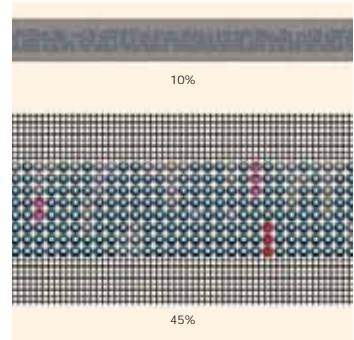
Trend Collection
Autumn/Winter 2009/10

55 120* 03



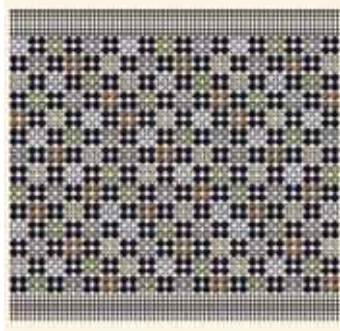
C	086-280/550/001/215/383/001DOR
E	FB SS20/SS20/SS20/SS20/SS20/SS20
S	-19x98
M	10 M 30%

55 611 12



C	086-001METBL/280HEM/227/502
E	FB SS12/SS12/SS12/SS12
S	-297x28
M	10 M

55 612* 03

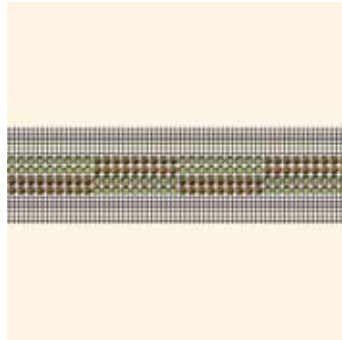


C	086-280/215/550/001DOR/001/383
E	FB SS12/SS12/SS12/SS12/SS12/SS12
S	-42x98
M	10 M 42%



Trend Collection
Spring/Summer 2010

55 121 12

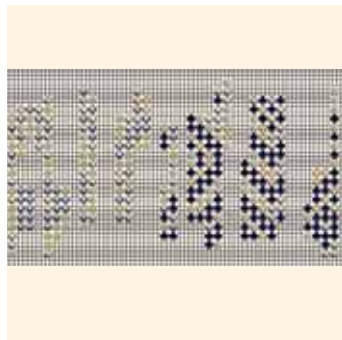


C	086-001DOR/550
E	FB SS20/SS20
S	-88x19 (EXCL. NET-EDGE)
M	10 M 25%



Trend Collection
Autumn/Winter 2010/11

55 122 06



C	082-288/001SSHA/280HEM/383/246/287
E	FB SS20/SS20/SS20/SS20/SS20/SS20
S	-182x98 (EXCL. NET-EDGE)
M	10 PCS 30%

* Please note that slight colour changes have been made.

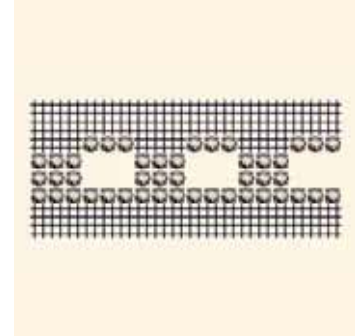
Trend Collection
Spring/Summer 2011

55 123 10



C	081-001MLGLD	
E	FB SS20	
S	-49x93 (EXCL. NET-EDGE)	
M	10 PCS	30%

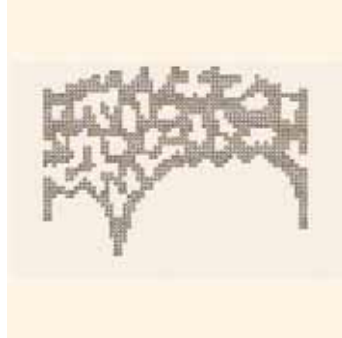
55 124 06



C	086-001SSHA	
E	FB SS20	
S	-30x20 (EXCL. NET-EDGE)	
M	10 M	45%

Special Collection
Crystal Wedding

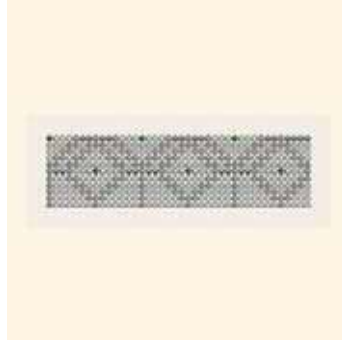
55 119* Royal Wedding



C	082-001GSHA/001MLGLD/001SSHA	
E	FB SS20/SS20/SS20	
S	-295x211	
M	10 PCS	12%

Special Collection
Crystal Loves Leather 2009

55 613 Arabesque Dreams



C	082-001/215/001/280HEM/213/393	
E	FB SS12/SS12/SS12/SS12/SS12/SS12	
S	-140x38 (EXCL. NET-EDGE)	
M	10 PCS	24%



*Please note that slight colour changes have been made.

Available Options with Net-edge

<<<

Article Number	None	1 Side	2 Sides	3 Sides	4 Sides	Tolerance
55100			212 Black / 222 White	312 Black / 322 White	412 Black / 422 White	+/- 8%
55101		112 Black / 122 White	212 Black / 222 White	312 Black / 322 White	412 Black / 422 White	+/- 8%
55102			212 Black / 222 White	312 Black / 322 White	412 Black / 422 White	+/- 8%
55103			212 Black / 222 White	312 Black / 322 White	412 Black / 422 White	+/- 8%
55105	012 Black / 022 White	112 Black / 122 White	212 Black / 222 White	312 Black / 322 White	412 Black / 422 White	+/- 2%
55106	012 Black / 022 White	112 Black / 122 White	212 Black / 222 White	312 Black / 322 White	412 Black / 422 White	+/- 8%
55108						
55110	012 Black / 022 White	112 Black / 122 White	212 Black / 222 White	312 Black / 322 White	412 Black / 422 White	+/- 2%
55111					412 Black / 422 White	+/- 2%
55112					412 Black / 422 White	+/- 2%
55113					412 Black / 422 White	+/- 8%
55114					412 Black / 422 White	+/- 8%
55115					412 Black / 422 White	+/- 8%
55117	012 Black / 022 White	112 Black / 122 White	212 Black / 222 White			+/- 2%
55118	012 Black / 022 White	112 Black / 122 White	212 Black / 222 White			+/- 2%
55119					412 Black / 422 White	+/- 2%
55120	012 Black / 022 White	112 Black / 122 White	212 Black / 222 White			+/- 2%
55121	012 Black / 022 White	112 Black / 122 White	212 Black / 222 White			+/- 2%
55122					412 Black / 422 White	+/- 2%
55123					412 Black / 422 White	+/- 2%
55124				312 Black / 322 White	412 Black / 422 White	+/- 8%
55200			212 Black / 222 White			+/- 8%
55201		112 Black / 122 White	212 Black / 222 White			+/- 8%
55202			212 Black / 222 White			+/- 8%
55203			212 Black / 222 White			+/- 8%
55602	012 Black / 022 White	112 Black / 122 White	212 Black / 222 White	312 Black / 322 White	412 Black / 422 White	+/- 2%
55604	012 Black / 022 White	112 Black / 122 White	212 Black / 222 White			+/- 2%
55605	012 Black / 022 White	112 Black / 122 White	212 Black / 222 White	312 Black / 322 White	412 Black / 422 White	+/- 2%
55607	012 Black / 022 White	112 Black / 122 White	212 Black / 222 White			+/- 2%
55609	012 Black / 022 White	112 Black / 122 White	212 Black / 222 White	312 Black / 322 White	412 Black / 422 White	+/- 2%
55610	012 Black / 022 White	112 Black / 122 White	212 Black / 222 White	312 Black / 322 White	412 Black / 422 White	+/- 2%
55611	012 Black / 022 White	112 Black / 122 White	212 Black / 222 White			+/- 2%
55612	012 Black / 022 White	112 Black / 122 White	212 Black / 222 White			+/- 2%
55613	012 Black / 022 White	112 Black / 122 White	212 Black / 222 White	312 Black / 322 White	412 Black / 422 White	+/- 2%
55614	012 Black / 022 White	112 Black / 122 White	212 Black / 222 White			+/- 2%
55617	012 Black / 022 White	112 Black / 122 White	212 Black / 222 White			+/- 2%
55618	012 Black / 022 White	112 Black / 122 White	212 Black / 222 White			+/- 2%



A special motif is any individual design created by the customer, which is different from the Metal Trimmings Standard or Trend Collections. This service opens up many customisation possibilities and enables you to profit from Swarovski's longtime experience and design expertise. A range of customisation options for existing motives is available (see "Customisation Possibilities" below). You may also submit sketches of a design that will suit your special needs – such as a brand image or an image to suit a particular sales campaign. This will then be made up according to your specifications using Computer Aided Design, which allows for easy adjustments according to your needs.

Customisation Possibilities

<<<

- Change of size of an existing motif
- Logos or brand names
- Creation of pieces or rows
- Up to nine colours/elements possible per Metal Trimming
- For thread- and net-edge options please see the respective matrix for all available options.

Ordering Process

<<<

Send the request with a drawing you wish to order to your nearest Swarovski sales office. Make sure you include all measurements to the desired motif. Please also indicate which product group your special motif refers to (Flat Back Motives, Chaton Motives etc.). You will then receive a quotation including your article number, minimum order quantity, price, and the line drawing of your special motif in PDF format. Please contact your Swarovski sales office again if any changes need to be made. Your special motif will be produced and delivered following your confirmation.

Please Note

<<<

Please always submit your drawing of the desired motif to represent it in the actual size you require. A small sketch, when enlarged to the desired size, will have blurred lines that will make it difficult to correctly reinterpret. Pictures or drawings representing 100% size of the design or very good quality scans in JPG, BMP or DXF format will ensure that we have clear data to work with. These can also be sent via email or on a CD-ROM. If sending a sewing pattern, please include the whole pattern and not just cut outs. When the sketch is submitted as a hard copy by fax or e-mail, please include a scale legend (e.g. copy/scan with ruler next to the drawing). This will ensure that the desired size of the motif can be identified.

Special productions are generally offered to all our customers if feasibility is given and our General Terms and Conditions are applied. Please note that the simple order of a design does not grant exclusive production of this design to the customer.

Article Explanation

<<<

53 000



SS	SS 18
M	1,000 PCS
	100%

53 000	SS	M	100%
Article number	Stone size	Minimum order quantity in pieces (PCS)	Documentation size in %

Ordering Example & Product Variety Explanation

<<<

53 000	082	001
Article number	Colour of casing	Colour of crystals
	081 Gold 082 Silver 086 Gun metal 088 Stainless steel	Please see the respective product matrix for all available code references.

Please note that the back parts for Rivets have to be ordered separately. Please see the respective product matrix for all available back parts on page 569 and 573.

Metal Trimmings

Metal Components

Rivets

53 000



SS SS 18	
M 1,000 PCS	100%

53 001

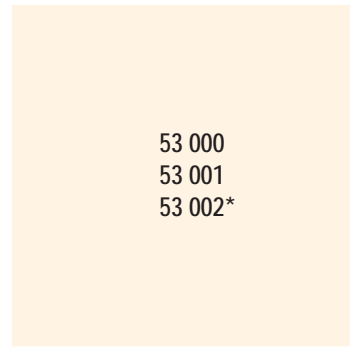


SS SS 29	
M 500 PCS	100%

53 002*



SS SS 18	
M 1,000 PCS	100%



53 000
53 001
53 002*

Colour of Casing				
	081 Gold	082 Silver	086 Gun Metal	088 Stainless Steel

Colour	081 Gold	082 Silver	086 Gun Metal	088 Stainless Steel
Crystal F (001)	■	■	■	■
Crystal AB F (001 AB)	■	■	■	■
Crystal Copper F (001 COP)	■	■	■	■
Crystal Golden Shadow F (001 GSHA)	■	■	■	■
Crystal Metallic Blue F (001 METBL)	■	■	■	■
Crystal Metallic Light Gold F (001 MLGLD)	■	■	■	■
Crystal Silver Shade F (001 SSHA)	■	■	■	■
Jet (280)	■	■	■	■
Air Blue Opal F (285)	■	■	■	■
Amethyst F (204)	■	■	■	■
Black Diamond F (215)	■	■	■	■
Cyclamen Opal F (398)	■	■	■	■
Dark Indigo F (288)	■	■	■	■
Fern Green F (291)	■	■	■	■
Fuchsia F (502)	■	■	■	■
Greige F (284)	■	■	■	■
Indian Pink F (289)	■	■	■	■
Light Colorado Topaz F (246)	■	■	■	■
Light Grey Opal F (383)	■	■	■	■
Light Siam F (227)	■	■	■	■
Mocca F (286)	■	■	■	■
Pacific Opal F (390)	■	■	■	■
Padparadscha F (542)	■	■	■	■
Palace Green Opal F (393)	■	■	■	■
Peridot F (214)	■	■	■	■
Provence Lavender F (283)	■	■	■	■
Purple Velvet F (277)	■	■	■	■
Rose F (209)	■	■	■	■
Rose Water Opal F (395)	■	■	■	■
Sand Opal F (287)	■	■	■	■
Sapphire F (206)	■	■	■	■
Siam F (208)	■	■	■	■
Smoked Topaz F (220)	■	■	■	■
Topaz F (203)	■	■	■	■
Vintage Rose F (319)	■	■	■	■

* Please note that it is explicitly recommended to use Rivet 53002 without back part. If you anyhow (against our recommendation) want to take a back part, please use back part 53009.

Metal Trimmings

Metal Components

Rivets

53 005

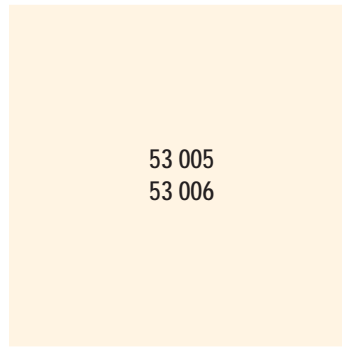


SS	SS 34	
M	500 PCS	100%

53 006



SS	SS 39	
M	300 PCS	100%

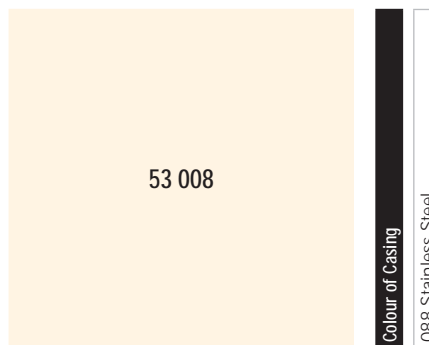


Colour	081 Gold	082 Silver	086 Gun Metal	088 Stainless Steel
Crystal F (001)	■	■	■	■
Crystal AB F (001 AB)	■	■	■	■
Crystal Copper F (001 COP)	■	■	■	■
Crystal Golden Shadow F (001 GSHA)	■	■	■	■
Crystal Metallic Blue F (001 METBL)	■	■	■	■
Crystal Metallic Light Gold F (001 MLGLD)	■	■	■	■
Crystal Silver Shade F (001 SSHA)	■	■	■	■
Jet (280)	■	■	■	■
Air Blue Opal F (285)	■	■	■	■
Amethyst F (204)	■	■	■	■
Black Diamond F (215)	■	■	■	■
Cyclamen Opal F (398)	■	■	■	■
Dark Indigo F (288)	■	■	■	■
Fern Green F (291)	■	■	■	■
Fuchsia F (502)	■	■	■	■
Greige F (284)	■	■	■	■
Indian Pink F (289)	■	■	■	■
Light Colorado Topaz F (246)	■	■	■	■
Light Grey Opal F (383)	■	■	■	■
Light Siam F (227)	■	■	■	■
Mocca F (286)	■	■	■	■
Pacific Opal F (390)	■	■	■	■
Padparadscha F (542)	■	■	■	■
Palace Green Opal F (393)	■	■	■	■
Peridot F (214)	■	■	■	■
Provence Lavender F (283)	■	■	■	■
Purple Velvet F (277)	■	■	■	■
Rose F (209)	■	■	■	■
Rose Water Opal F (395)	■	■	■	■
Sand Opal F (287)	■	■	■	■
Sapphire F (206)	■	■	■	■
Siam F (208)	■	■	■	■
Smoked Topaz F (220)	■	■	■	■
Topaz F (203)	■	■	■	■
Vintage Rose F (319)	■	■	■	■

53 008



SS PP 24	
M 500 PCS	100%



Colour of Casing

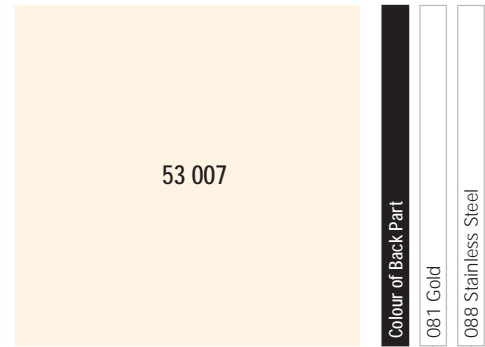
008 Stainless Steel

Colour	
Crystal F (001)	
Crystal AB F (001 AB)	
Crystal Copper F (001 COP)	
Crystal Golden Shadow F (001 GSHA)	
Crystal Metallic Blue F (001 METBL)	
Crystal Metallic Light Gold F (001 MLGLD)	
Crystal Silver Shade F (001 SSHA)	
Jet (280)	
Air Blue Opal F (285)	
Amethyst F (204)	
Black Diamond F (215)	
Cyclamen Opal F (398)	
Dark Indigo F (288)	
Fern Green F (291)	
Fuchsia F (502)	
Greige F (284)	
Indian Pink F (289)	
Light Colorado Topaz F (246)	
Light Grey Opal F (383)	
Light Siam F (227)	
Mocca F (286)	
Pacific Opal F (390)	
Padparadscha F (542)	
Palace Green Opal F (393)	
Peridot F (214)	
Provence Lavender F (283)	
Purple Velvet F (277)	
Rose F (209)	
Rose Water Opal F (395)	
Sand Opal F (287)	
Sapphire F (206)	
Siam F (208)	
Smoked Topaz F (220)	
Topaz F (203)	
Vintage Rose F (319)	

53 007



M 1,000 PCS | 100%



53 007

Colour of Back Part

081 Gold

088 Stainless Steel

Rivets (Colour of Casing)

53000 (081/082/086)

53000 (088)

53001 (081/082/086)

53001 (088)

53005 (081/082/086)

53005 (088)

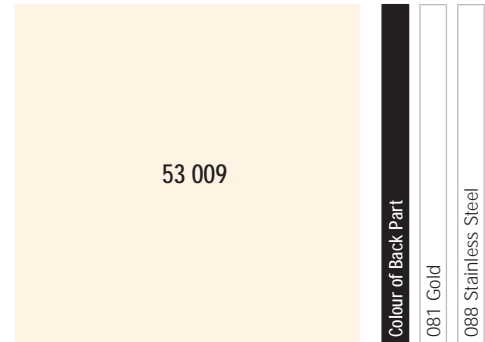
53006 (081/082/086)

53006 (088)

53 009



M 1,000 PCS | 100%



53 009

Colour of Back Part

081 Gold

088 Stainless Steel

Rivets (Colour of Casing)

53000 (081/082/086)

53000 (088)

53001 (081/082/086)

53001 (088)

53005 (081/082/086)

53005 (088)

53006 (081/082/086)

53006 (088)

53008 (088)

Ordering Example & Product Variety Explanation

<<<

53 007

Article number

081

Colour of casing

081 Gold

088 Stainless steel



53 100



SS SS 12	
M 1,440 PCS	100%

53 102

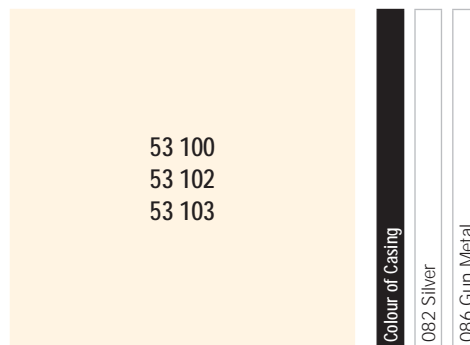


SS SS 16	
M 1,440 PCS	100%

53 103



SS SS 30	
M 720 PCS	100%



Colour	082 Silver	086 Gun Metal
Crystal F (001)	■	■
Crystal AB F (001 AB)	■	■
Crystal Copper F (001 COP)*	■	■
Crystal Golden Shadow F (001 GSHA)*	■	■
Crystal Metallic Blue F (001 METBL)*	■	■
Crystal Metallic Light Gold F (001 MLGLD)*	■	■
Crystal Red Magma F (001 REDM)*	■	■
Crystal Silver Shade F (001 SSHA)*	■	■
Jet (280)	■	■
Air Blue Opal F (285)*	■	■
Amethyst F (204)	■	■
Black Diamond F (215)	■	■
Caribbean Blue Opal F (394)*	■	■
Cyclamen Opal F (398)*	■	■
Dark Indigo F (288)*	■	■
Fern Green F (291)*	■	■
Fuchsia F (502)	■	■
Greige F (284)*	■	■
Indian Pink F (289)*	■	■
Light Colorado Topaz F (246)	■	■
Light Grey Opal F (383)*	■	■
Light Siam F (227)	■	■
Mocca F (286)*	■	■
Pacific Opal F (390)*	■	■
Padparadscha F (542)*	■	■
Palace Green Opal F (393)*	■	■
Peridot F (214)	■	■
Provence Lavender F (283)*	■	■
Purple Velvet F (277)*	■	■
Rose F (209)	■	■
Sand Opal F (287)*	■	■
Sapphire F (206)	■	■
Siam F (208)	■	■
Smoked Topaz F (220)	■	■
Topaz F (203)	■	■
Vintage Rose F (319)*	■	■

* These colours are not available for article 53103.



53 200



SS PP 31	
M 1,440 PCS	100%

53 201

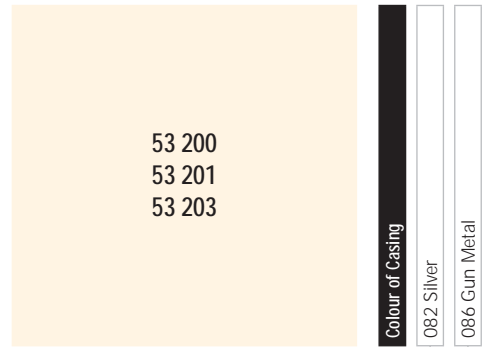


SS SS 18	
M 1,440 PCS	100%

53 203



SS SS 29	
M 720 PCS	100%



53 200
53 201
53 203

Colour of Casing

082 Silver

086 Gun Metal

Colour	082 Silver	086 Gun Metal
Crystal F (001)	■	■
Crystal AB F (001 AB)	■	■
Crystal Copper F (001 COP)	■	■
Crystal Golden Shadow F (001 GSHA)	■	■
Crystal Metallic Blue F (001 METBL)	■	■
Crystal Metallic Light Gold F (001 MLGLD)	■	■
Crystal Silver Shade F (001 SSHA)	■	■
Jet (280)	■	■
Air Blue Opal F (285)	■	■
Amethyst F (204)	■	■
Black Diamond F (215)	■	■
Cyclamen Opal F (398)	■	■
Dark Indigo F (288)	■	■
Fern Green F (291)	■	■
Fuchsia F (502)	■	■
Greige F (284)	■	■
Indian Pink F (289)	■	■
Light Colorado Topaz F (246)	■	■
Light Grey Opal F (383)	■	■
Light Siam F (227)	■	■
Mocca F (286)	■	■
Pacific Opal F (390)	■	■
Padparadscha F (542)	■	■
Palace Green Opal F (393)	■	■
Peridot F (214)	■	■
Provence Lavender F (283)	■	■
Purple Velvet F (277)	■	■
Rose F (209)	■	■
Rose Water Opal F (395)	■	■
Sand Opal F (287)	■	■
Sapphire F (206)	■	■
Siam F (208)	■	■
Smoked Topaz F (220)	■	■
Topaz F (203)	■	■
Vintage Rose F (319)	■	■

Metal Trimmings

Metal Components

Crystal Pearl Rivets

53 400



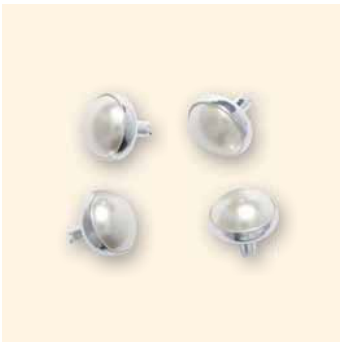
SS 6 mm	
M 500 PCS	100%

53 401

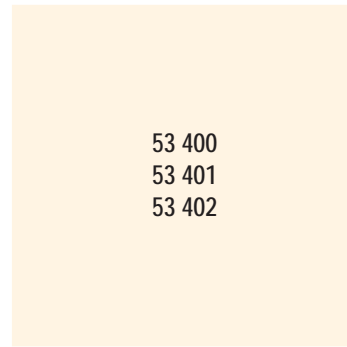


SS 8 mm	
M 300 PCS	100%

53 402



SS 10 mm	
M 300 PCS	100%



Colour of Casing			
	081 Gold	082 Silver	086 Gun Metal

Colour

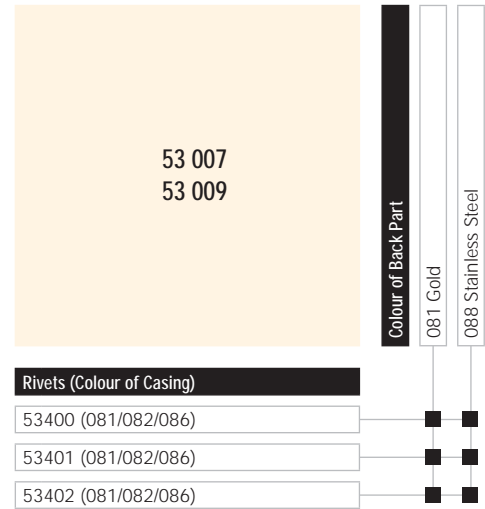
Crystal Antique Brass Pearl (001 402)	■	■	■
Crystal Black Pearl (001 298)	■	■	■
Crystal Bordeaux Pearl (001 538)	■	■	■
Crystal Bright Gold Pearl (001 306)	■	■	■
Crystal Bronze Pearl (001 295)	■	■	■
Crystal Brown Pearl (001 815)	■	■	■
Crystal Burgundy Pearl (001 301)	■	■	■
Crystal Copper Pearl (001 159)	■	■	■
Crystal Coral Pearl (001 816)	■	■	■
Crystal Cream Pearl (001 620)	■	■	■
Crystal Creamrose Light Pearl (001 618)	■	■	■
Crystal Creamrose Pearl (001 621)	■	■	■
Crystal Dark Green Pearl (001 814)	■	■	■
Crystal Dark Grey Pearl (001 617)	■	■	■
Crystal Dark Purple Pearl (001 309)	■	■	■
Crystal Deep Brown Pearl (001 414)	■	■	■
Crystal Gold Pearl (001 296)	■	■	■
Crystal Lavender Pearl (001 524)	■	■	■
Crystal Light Blue Pearl (001 302)	■	■	■
Crystal Light Green Pearl (001 293)	■	■	■
Crystal Light Grey Pearl (001 616)	■	■	■
Crystal Maroon Pearl (001 388)	■	■	■
Crystal Mauve Pearl (001 160)	■	■	■
Crystal Mystic Black Pearl (001 335)	■	■	■
Crystal Night Blue Pearl (001 818)	■	■	■
Crystal Peach Pearl (001 300)	■	■	■
Crystal Platinum Pearl (001 459)	■	■	■
Crystal Powder Almond Pearl (001 305)	■	■	■
Crystal Powder Green Pearl (001 393)	■	■	■
Crystal Powder Rose Pearl (001 352)	■	■	■
Crystal Rosaline Pearl (001 294)	■	■	■
Crystal Tahitian-look Pearl (001 297)	■	■	■
Crystal White Pearl (001 650)	■	■	■

Metal Trimmings

53 007



M 1,000 PCS | 100%



53 009



M 1,000 PCS | 100%

Ordering Example & Product Variety Explanation

<<<

53 007

Article number

081

Colour of casing

081 Gold

088 Stainless steel

Photography: Christoph Sagel, Robert Striegl
Content is subject to change without notice. Errors and misprints excepted.
SWAROVSKI AG · P.O. Box 567 · 9495 Triesen · Liechtenstein

© 2010 Swarovski AG. All rights reserved. Partial or total publication, transmission, copy or other duplication of texts, graphics, pictures etc. which are to be found in this publication is forbidden without special consent by Swarovski AG.